

Multiphysics Modeling of the Graphite Electrode Joint in Electric Arc Furnaces for Scrap Steel Recycling

Nathan May

James Glickstein

Maren Waldner

Problem Statement

- The Electric Arc Furnace (EAF) uses graphite rods as electrodes to strike a powerful arc to melt scrap steel
- GrafTech International is a world leader in supplying graphite electrodes for the EAF process



Problem Statement

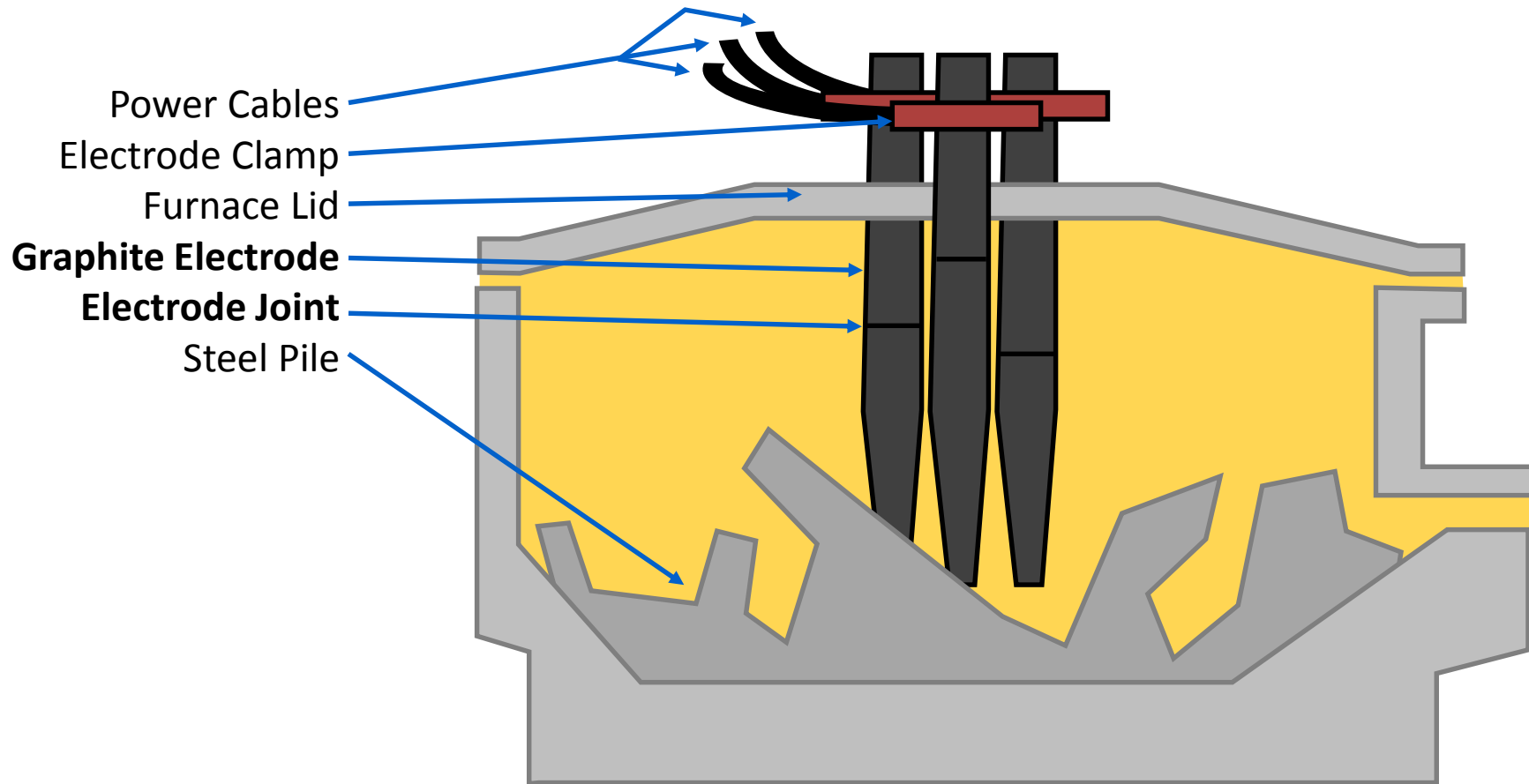
- The Electric Arc Furnace (EAF) is a massive industrial process, converting scrap steel into new raw material (millions of tons per year worldwide)
- Less greenhouse gas emissions versus Basic Oxygen Furnace steelmaking process (BOF, “Blast Furnace”)
[1]
 - BOF: 1.6 tonnes CO₂/tonne steel
 - EAF: 1.08 tonnes CO₂/tonne steel

[1] US EPA, AVAILABLE AND EMERGING TECHNOLOGIES FOR REDUCING GREENHOUSE GAS EMISSIONS FROM THE IRON AND STEEL INDUSTRY, Sept 2012, <https://www.epa.gov/sites/production/files/2015-12/documents/ironsteel.pdf>

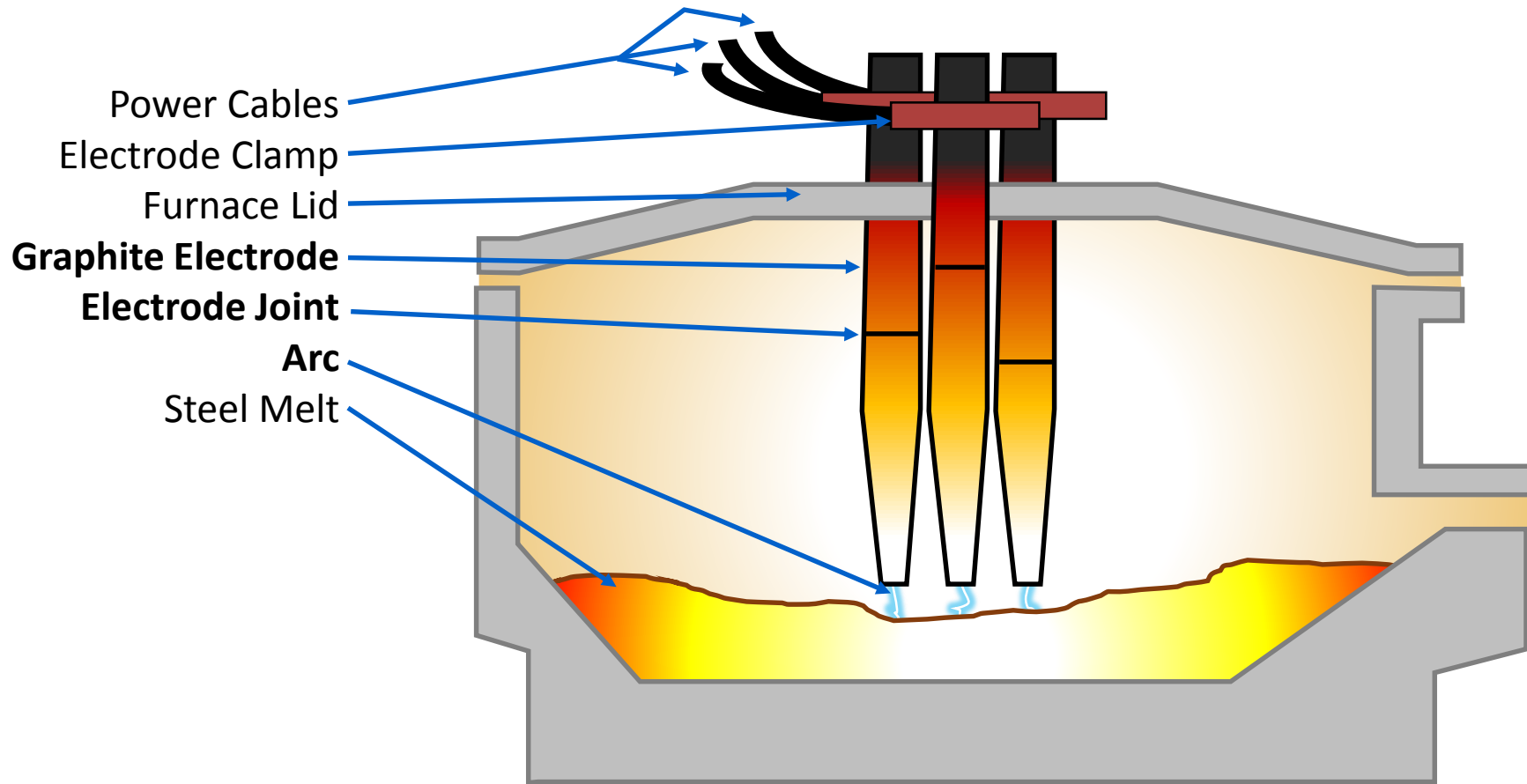
Problem Statement

- Previous finite element models have been very valuable to GrafTech's electrode business
- Previous models were relatively simple and coarse; new software and hardware enable next-generation of FEM
- Develop a multiphysics model of the electrode joint, including:
 - Structural mechanics and contact physics
 - Heat transfer
 - Electric currents
- Validate model through comparison with real data
- Better understand process/performance relationships
- Reduce design cycle time

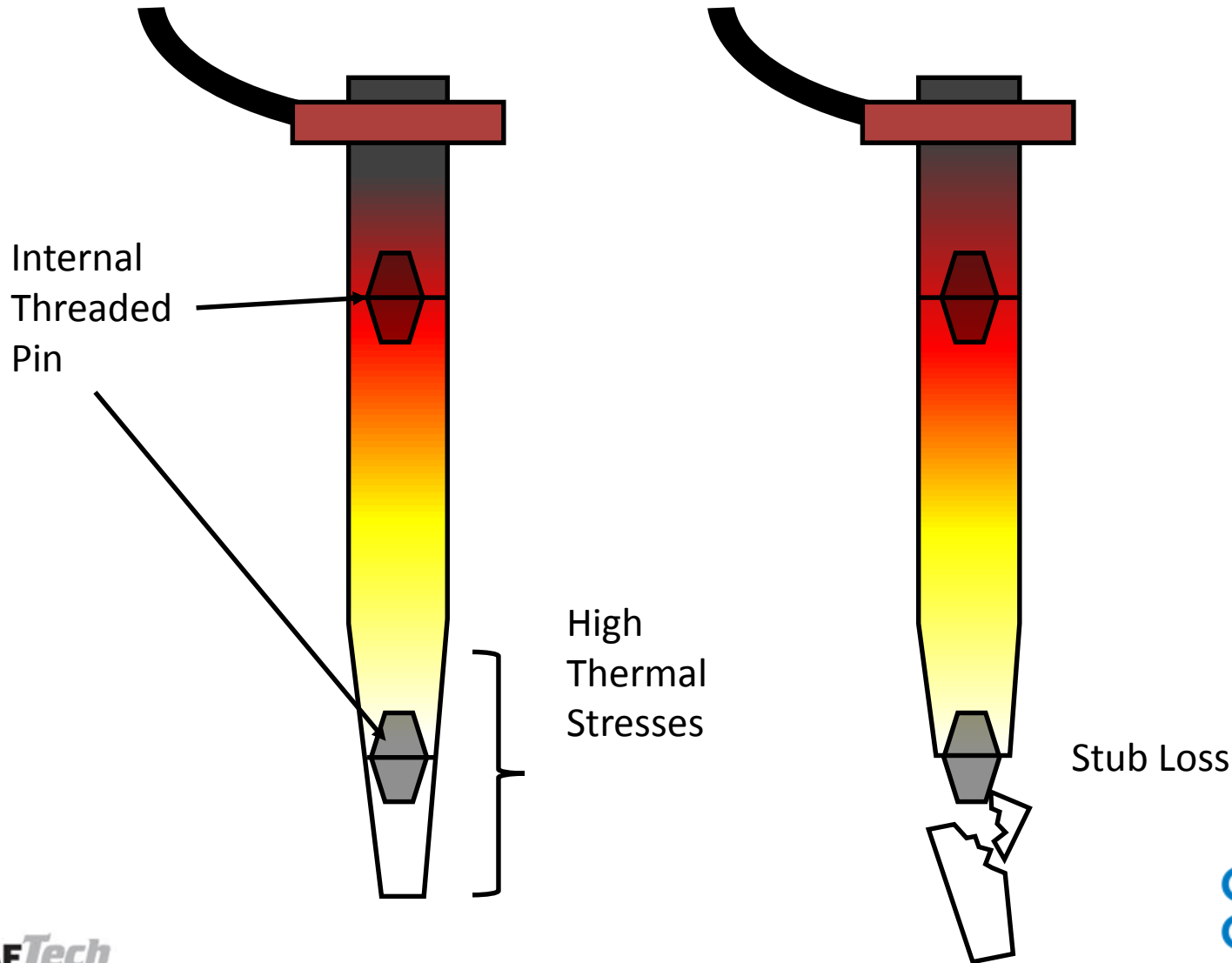
Problem Statement



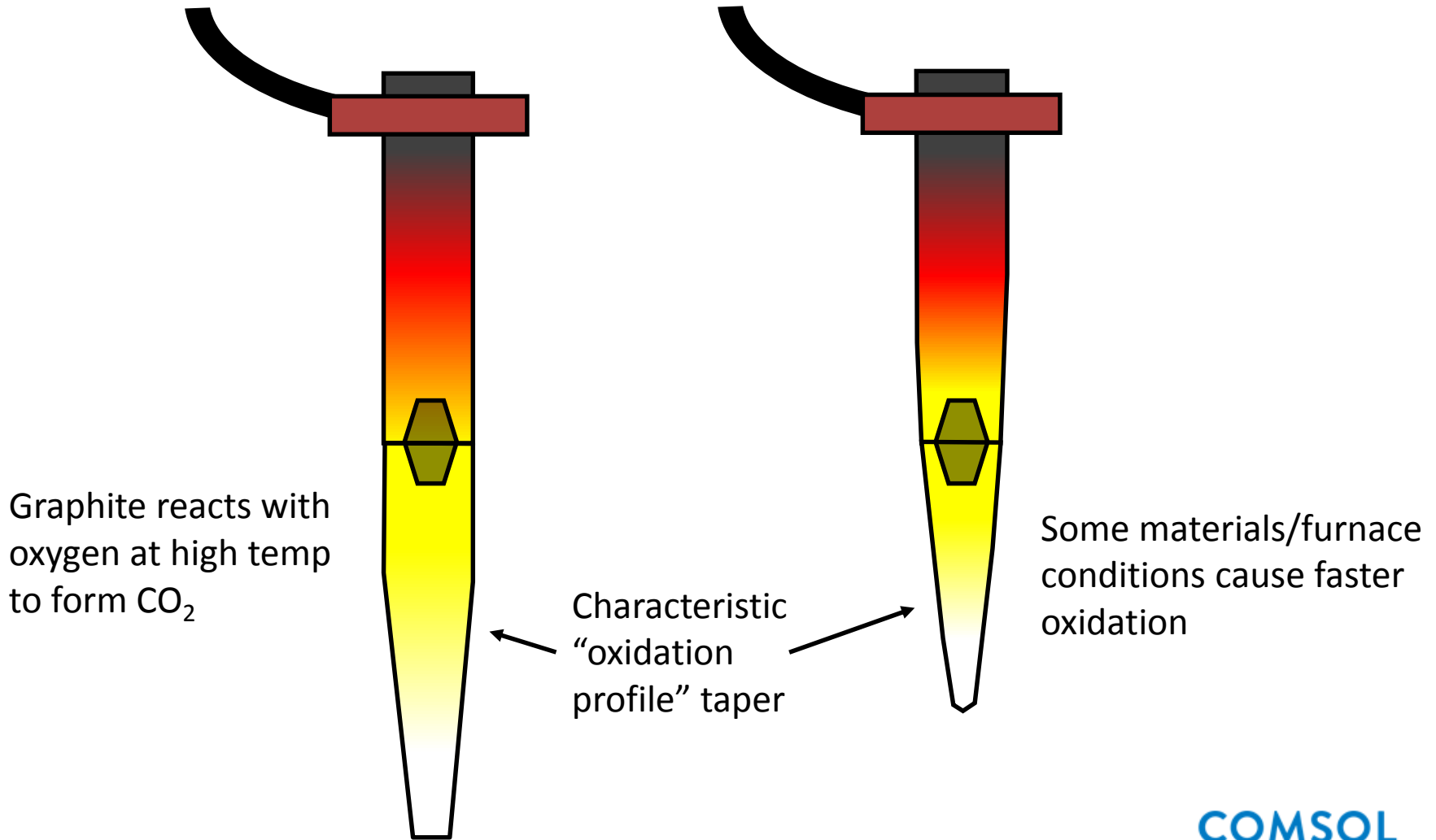
Problem Statement



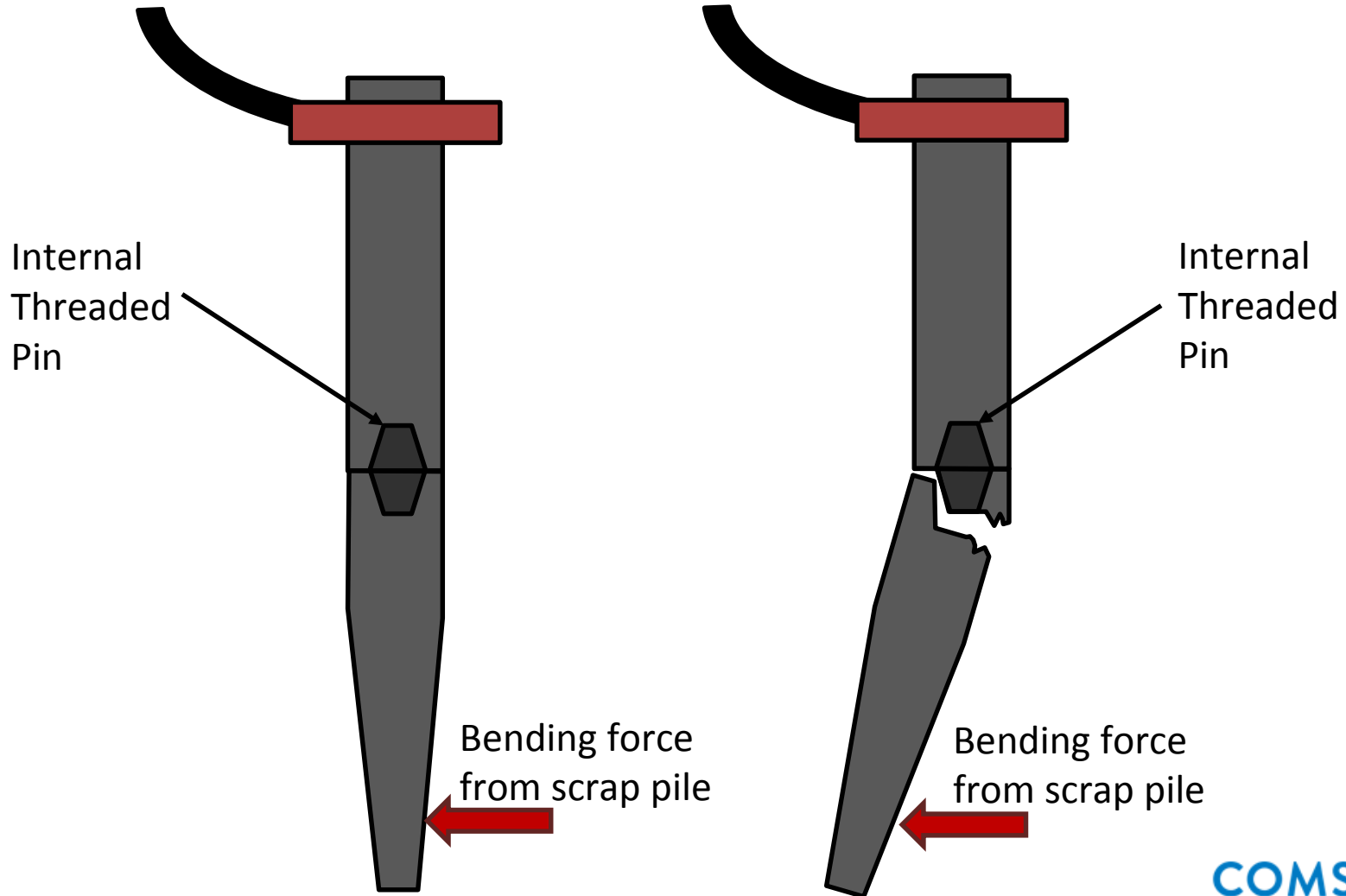
Failure Mechanism: Stub Loss



Failure Mechanism: Oxidation



Failure Mechanism: Column Break

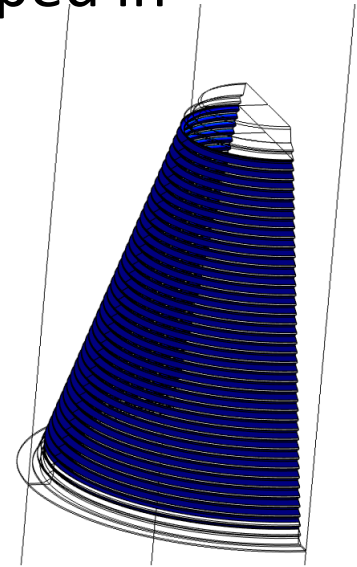


Problem Statement

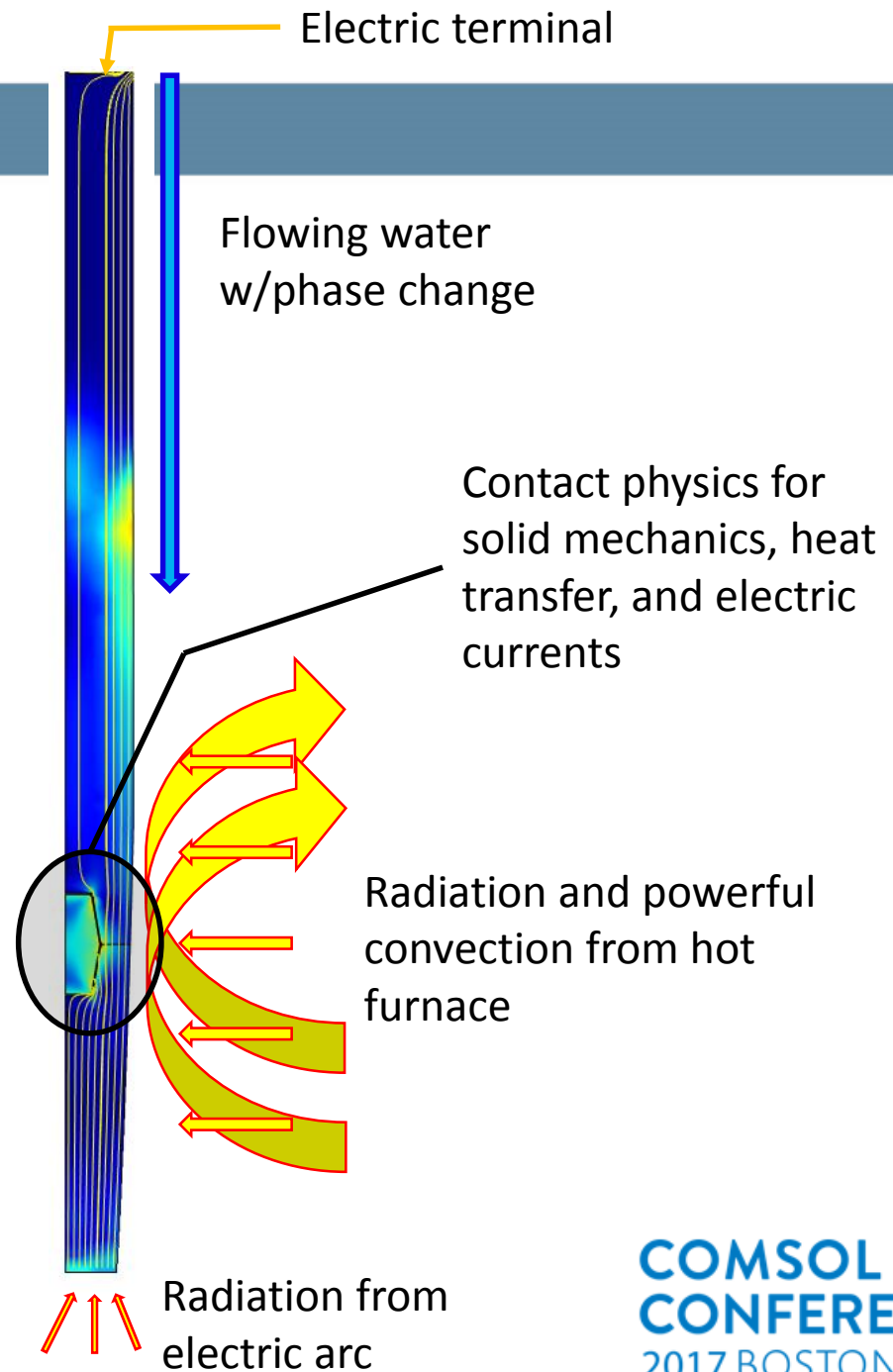
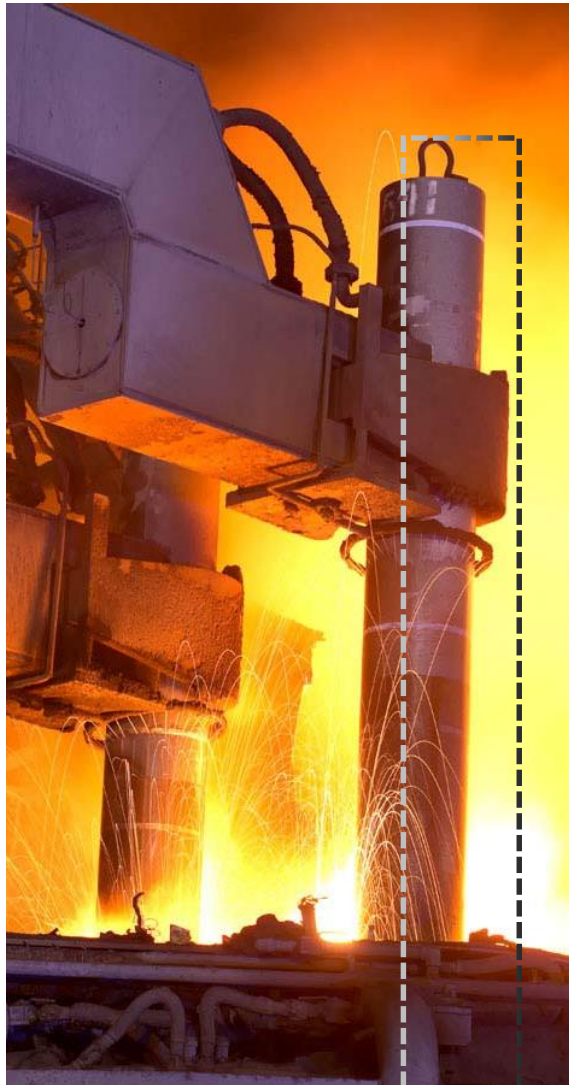
- Graphite Electrode consumption is a significant cost driver of EAF, *in particular*:
 - Stub loss: the tip of the electrode can crack and cause chunks of electrode to fall into the melt
 - Oxidation: furnace temperature is well over 1000 degC, and graphite oxidizes into CO₂ rapidly at this temperature
 - Column breaks: “scrap cave-ins” or poor electrode addition exert bending stress on column, leading to breaks high up and major process disruption
- Successive electrodes are connected at a “joint,” which becomes a critical point for reducing failure
- Because of the extreme environment, direct measurements are often difficult or impossible
- Graphite is a non-homogenous, anisotropic material
- Multiscale (>8 meters electrode and <10 microns defects) and multiphysics situation

Approach

- **Make a model that considers all three failure mechanisms!**
- Used COMSOL Multiphysics v5.3 (model developed in v5.0)
 - Structural Mechanics module
 - Heat Transfer module
 - Electric Current module
 - Moving Mesh module
- 2D Axisymmetric model:
 - Stationary pre-tensioning simulation
 - Transient multiphysics simulation of firing cycle
- 3D model:
 - Bending stress simulation
 - Transient multiphysics simulation of non-axisymmetric modes

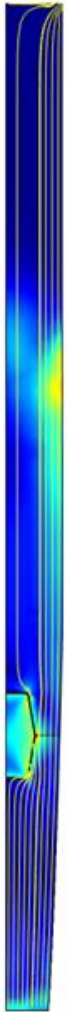


Model Scheme



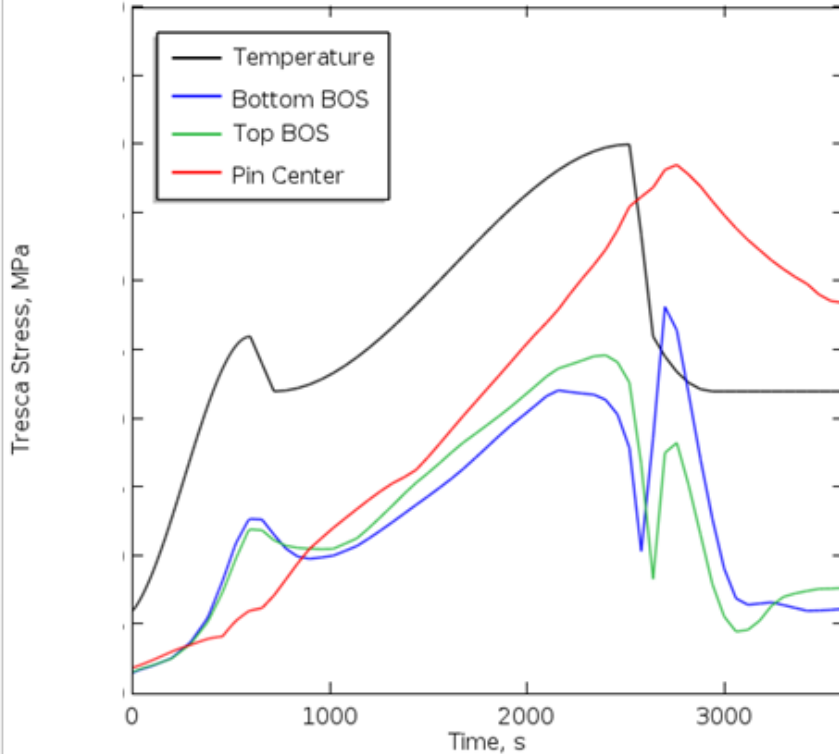
Model Validation

- Results were used on a comparative basis, in particular comparing the stress states of known failure location across different cases
- Used a variety of stress metrics, focusing on tresca and maximum principle stress criteria
- Focus on joint area as most common failure location
- Completed hundreds of simulations of different cases, grouped into about ten study areas

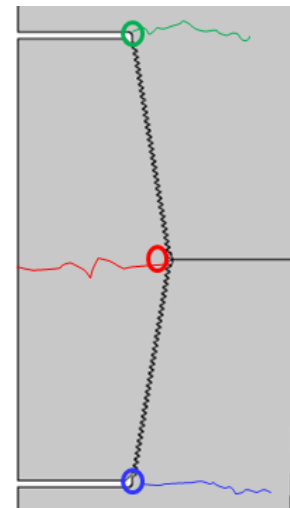


Stub Loss versus Firing Cycle

Global: (K) Point Graph: Tresca stress (MPa)
Point Graph: Tresca stress (MPa) Point Graph: Tresca stress (MPa)

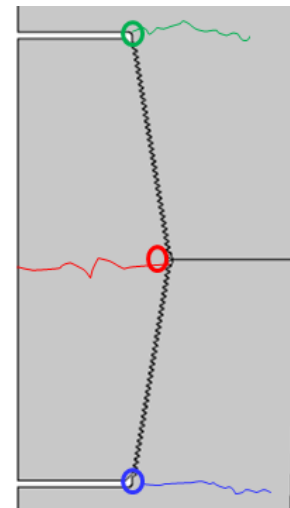
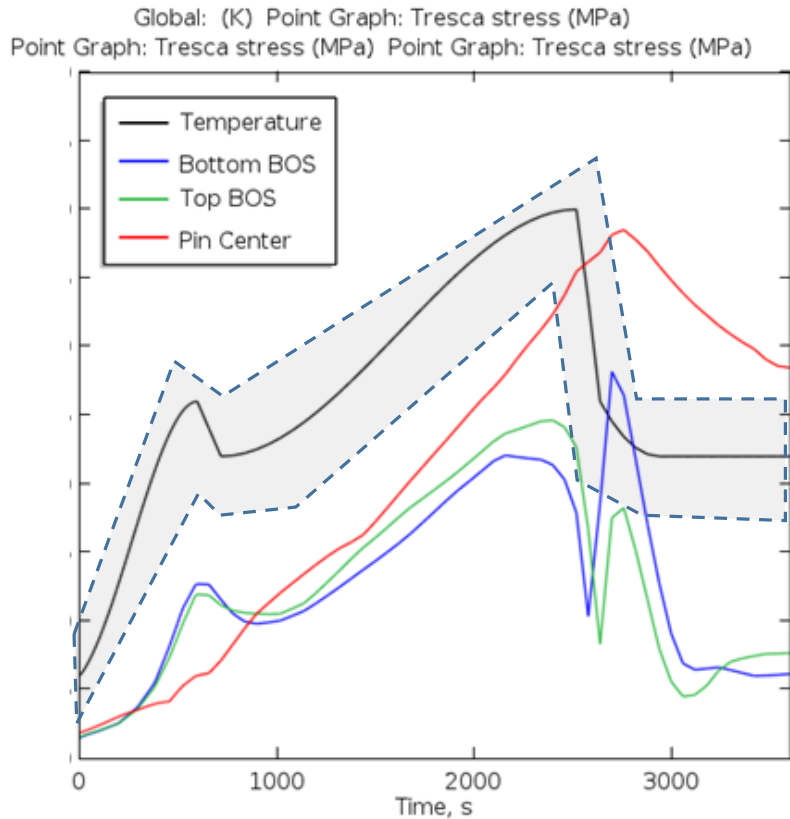


- EAF process has a characteristic firing cycle
- Involves heating and cooling segments
- Causes significant thermal stresses from temperature and material gradients



Stub Loss versus Firing Cycle

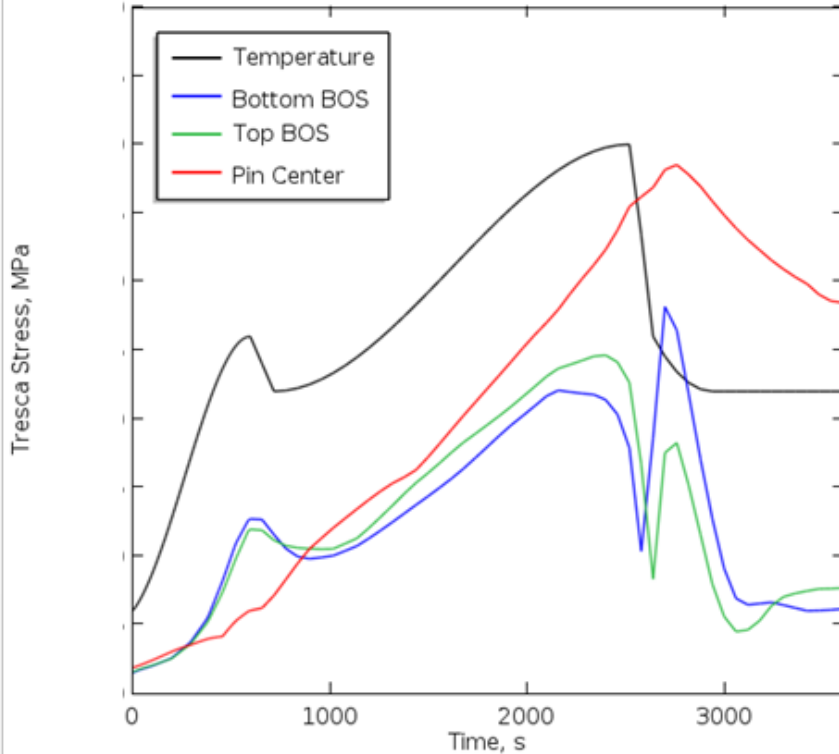
- EAF process has a **characteristic firing cycle**
- Involves heating and cooling segments
- Causes significant thermal stresses from temperature and material gradients



Stub Loss versus Firing Cycle

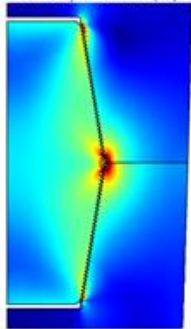
- EAF process has a characteristic firing cycle
- Involves heating and cooling segments
- **Causes significant thermal stresses from temperature and material gradients**

Global: (K) Point Graph: Tresca stress (MPa)
Point Graph: Tresca stress (MPa) Point Graph: Tresca stress (MPa)



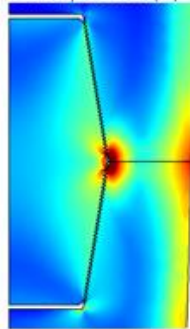
Stub Loss versus Firing Cycle

Time=2520 s Surface: Tresca stress (N/m²)
Line: Total displacement (m)



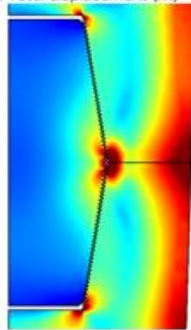
Power on,
highest temp

Time=2580 s Surface: Tresca stress (N/m²)
Line: Total displacement (m)



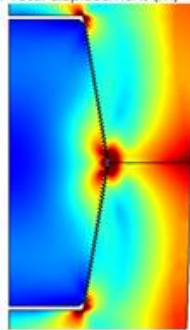
Power off,
cooling begins

Time=2640 s Surface: Tresca stress (N/m²)
Line: Total displacement (m)



Power off,
fastest cooling

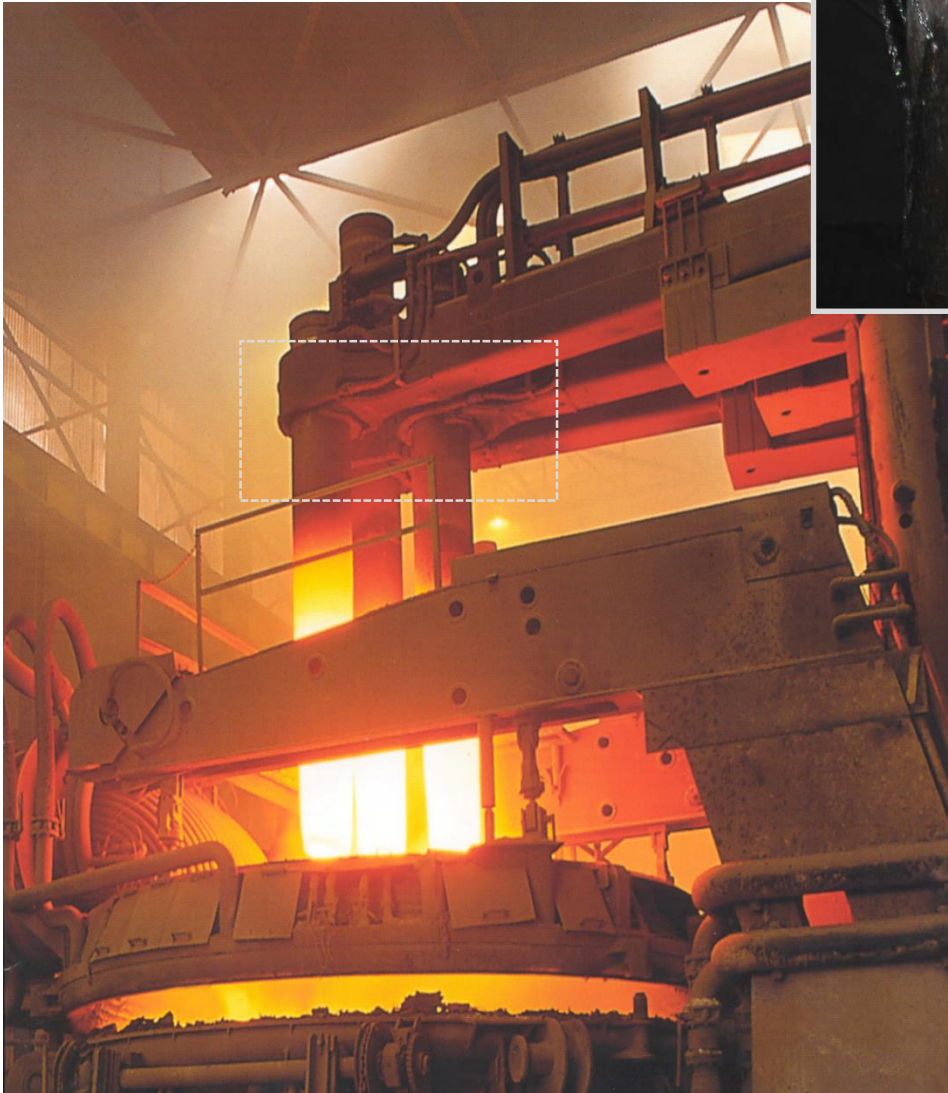
Time=2700 s Surface: Tresca stress (N/m²)
Line: Total displacement (m)



Power off,
cooling slows

- EAF process has a characteristic firing cycle
- Involves heating and cooling segments
- Causes significant thermal stresses from temperature and material gradients
- **Our analysis involves comparing these stresses at different times and places**

Oxidation

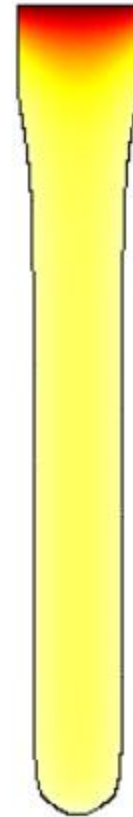


- Water flows from clamps down the exterior of the electrode
- Reduces temperature
- Provides barrier to oxygen migration
- Too much water flow can shift energy balance unfavorably

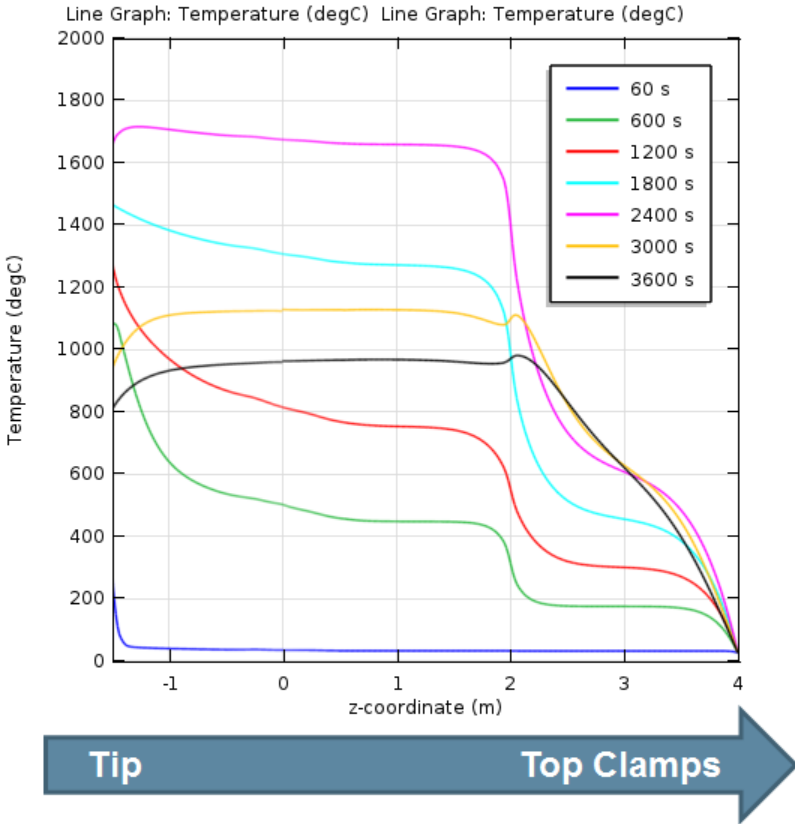
Oxidation

Time=6480 s Surface: Temperature (K)

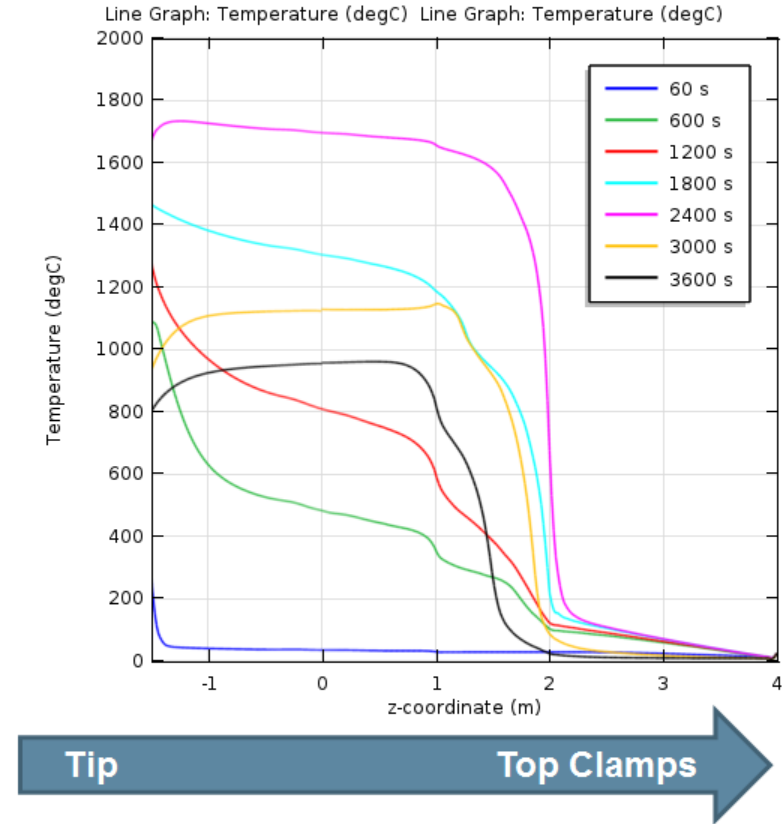
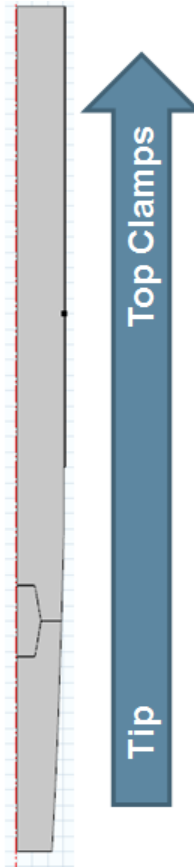
- Dependent on several factors:
 - Furnace type
 - Furnace oxygen/inert gas usage
 - Furnace power settings
 - Water cooling
- Deep multiphysics coupling is required
- Simulate water as a phase-change domain (built-in to COMSOL), but with constant velocity field



Oxidation



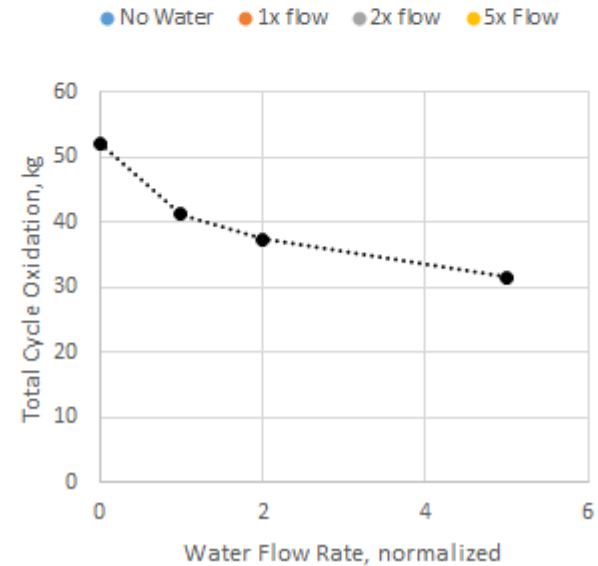
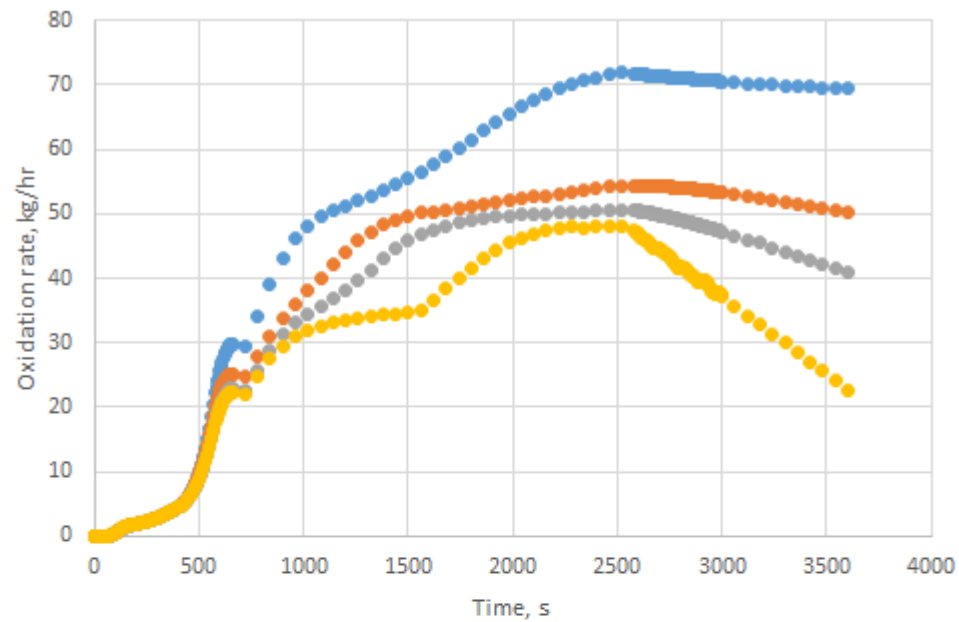
No Water Flow



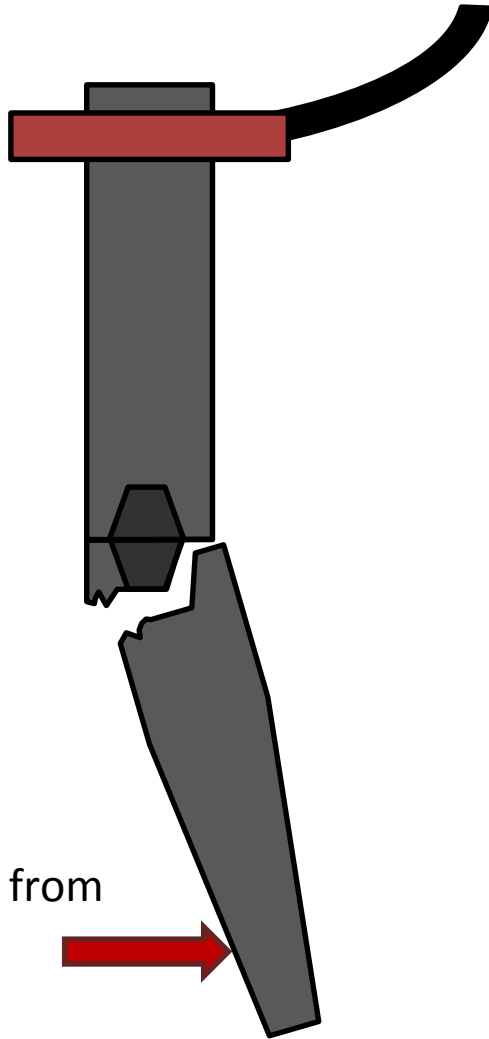
**With Reference
Water Flow**

Oxidation

- Use in-house testing to develop temp vs oxidation rate curves
- Integrate vs temperature and time
- Simulate total oxidation
- Test different materials' oxidation rates, simulate consumption rate savings
- Predicted oxidation rates match reality quite well

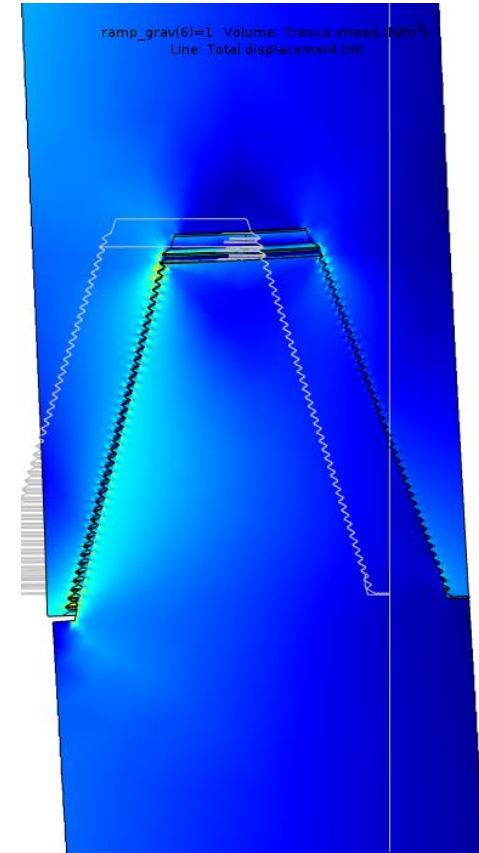


Electrode Bending



Bending force from
scrap pile

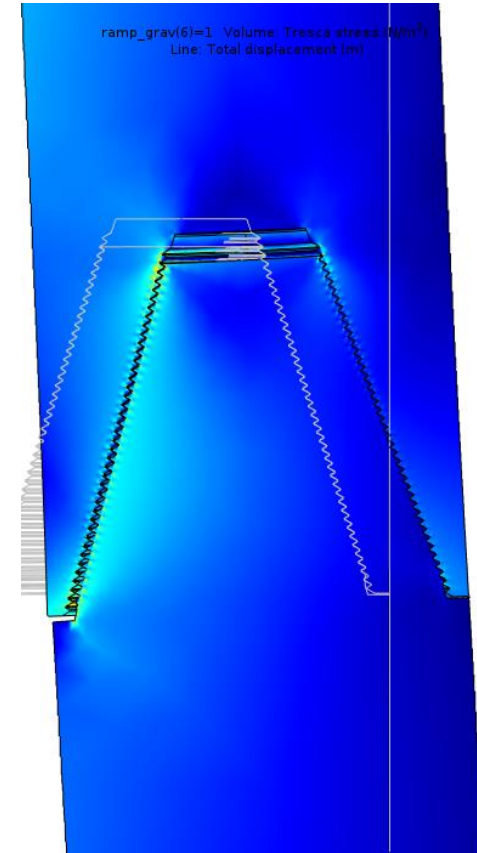
ramp_grav(6)=1
Volume: Tresca stress (N/m²)
Line: Total displacement (m)



3D Cases

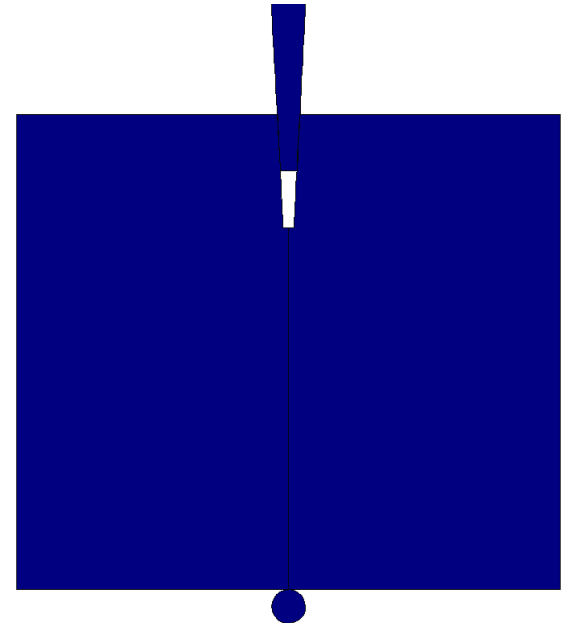
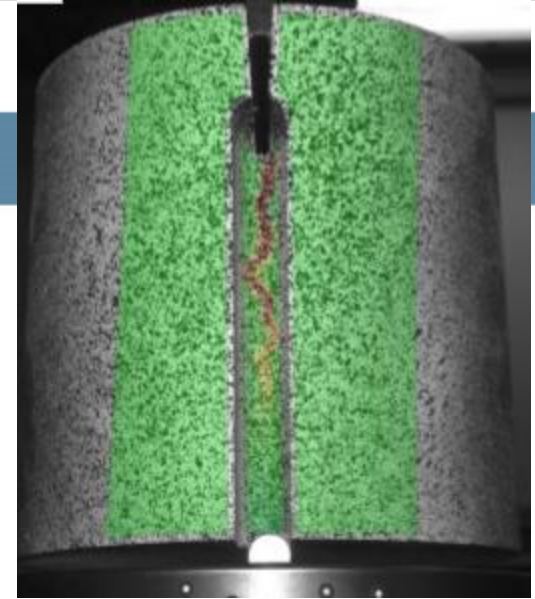
- 3D geometry is required for bending and other stress states
- Results make the model even more powerful, though require increasingly demanding hardware
- Model DoF/memory can exceed 2e7/350 Gb
- Results are very useful in understanding column breaks

ramp_grav(6)=1
Volume: Tresca stress (N/m²)
Line: Total displacement (m)



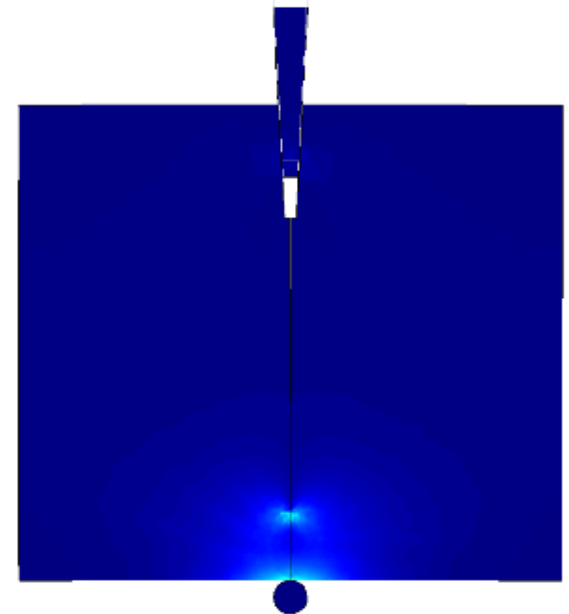
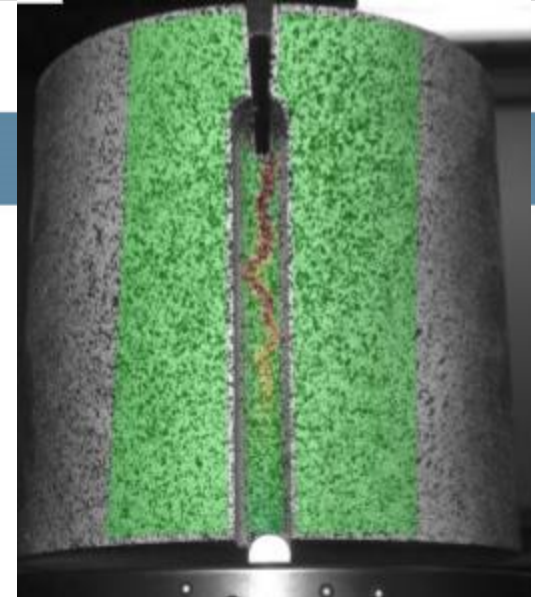
Future Work

- Already a useful design and engineering tool for GrafTech
- More 3D simulations!
- Deeper sensitivity analysis vs furnace conditions and materials
- Crack propagation and failure at high temperature
 - Cohesive zone debonding
 - Physical testing/comparison with DIC



Future Work

- Already a useful design and engineering tool for GrafTech
- More 3D simulations!
- Deeper sensitivity analysis vs furnace conditions and materials
- Crack propagation and failure at high temperature
 - Cohesive zone debonding
 - Physical testing/comparison with DIC

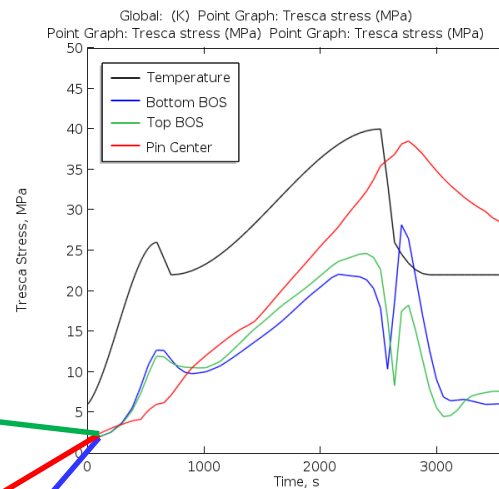
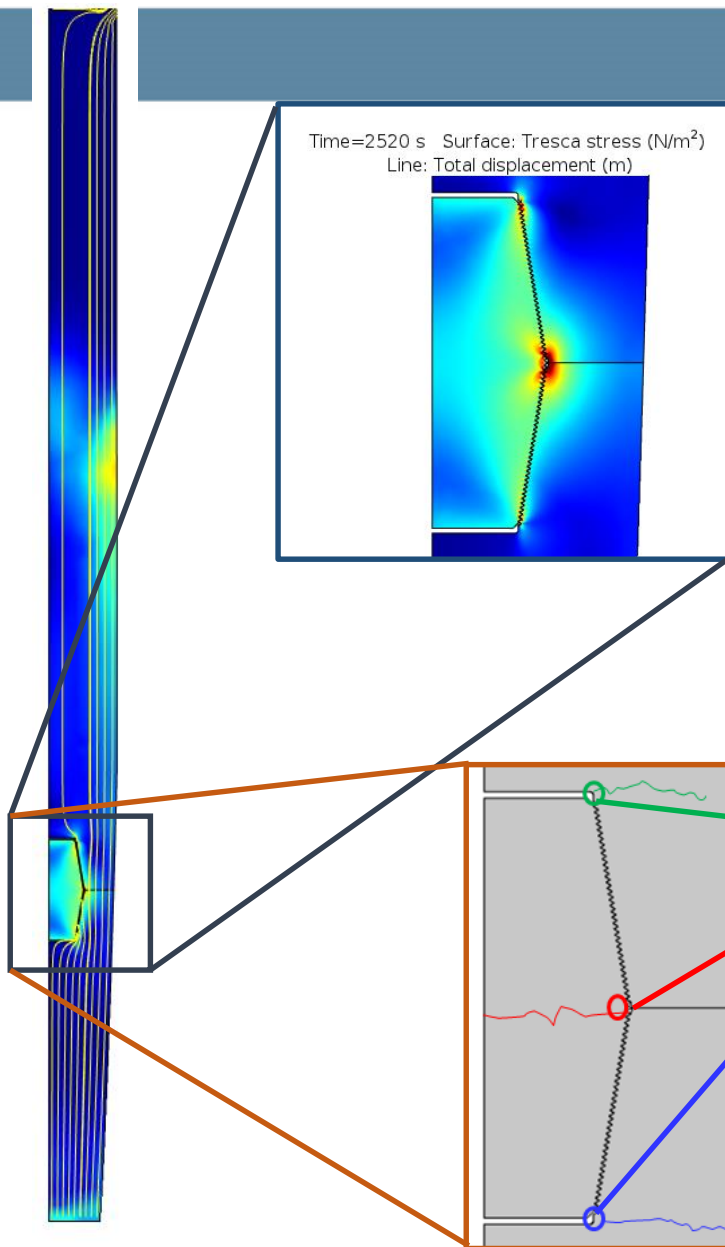


Thanks to Josh Thomas of
AltaSim for help setting up
early model version!

¿Questions?

Thank you for listening!

Model Validation



Oxidation

Time=0 s Surface: Temperature (K)

- Oxidation is the baseline driver of graphite electrode consumption rates
- Around **half** of electrode baseline consumption is wasted as oxidation
- Improved technology has steadily reduced oxidation rates, but more can be achieved!
- Water cooling is one key reducer of oxidation
- Modeling can help us understand key operating parameters to control and limit oxidation

